

M A  
A T

---

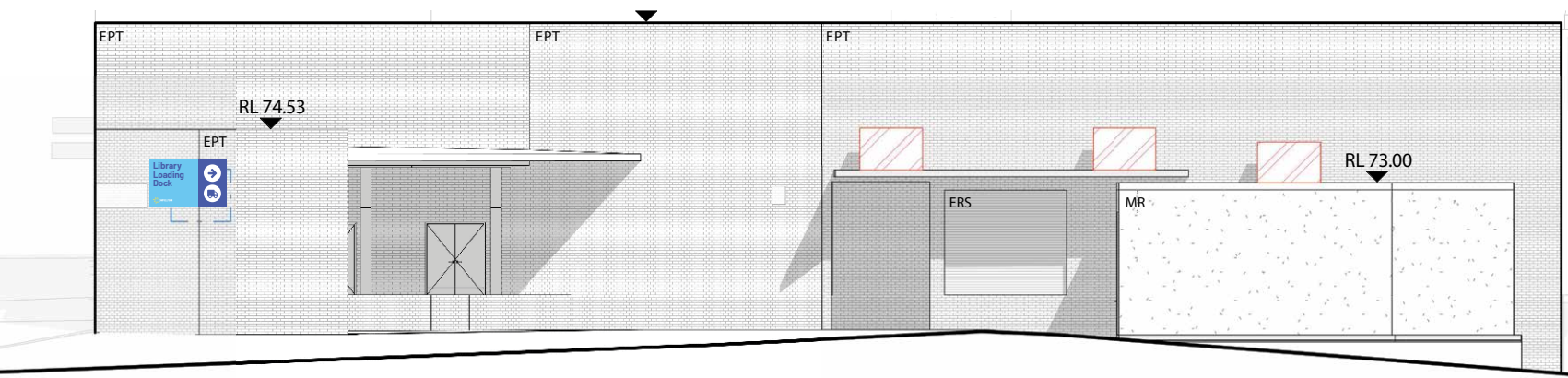
Queen Street  
Library

---

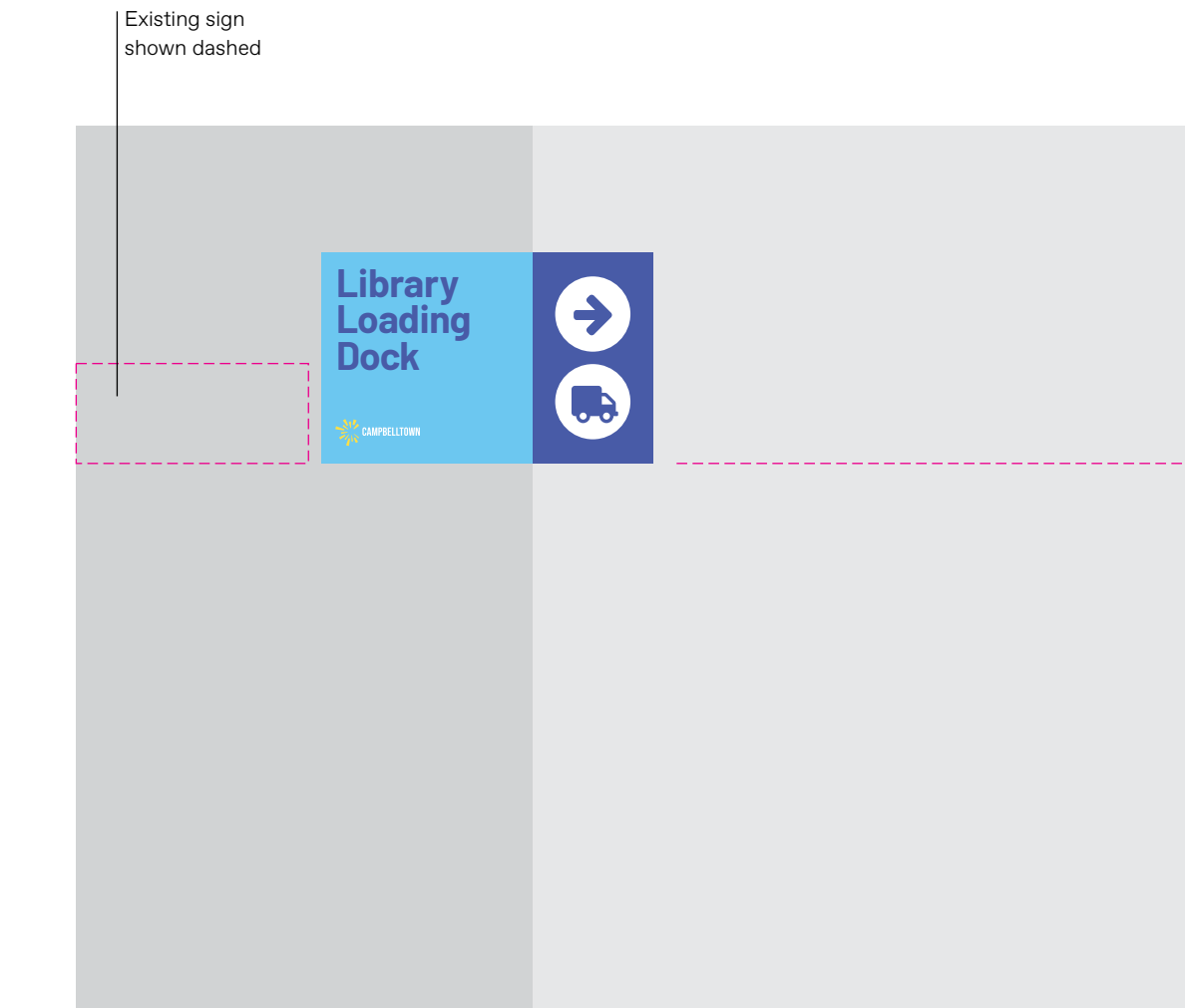
Signage  
Design Drawings

---

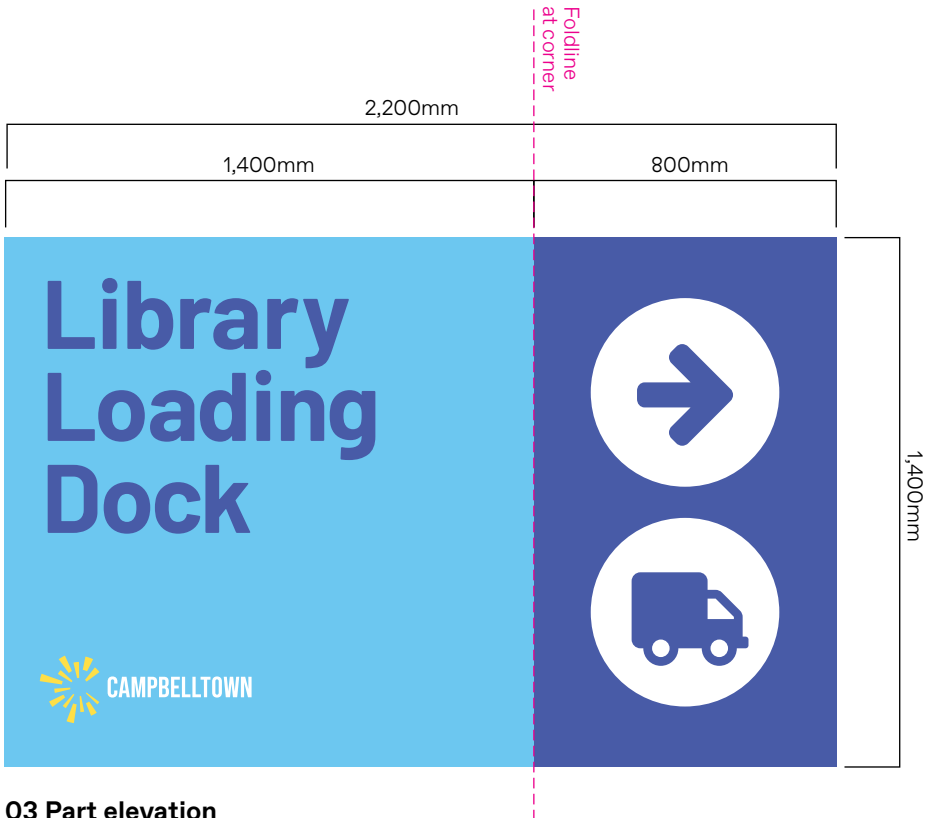
Issue for DA  
30.11.23



01 Part elevation  
Loading Dock  
Scale 1:50



02 Part elevation  
Loading Dock  
Scale 1:50



03 Part elevation  
Loading Dock  
Scale 1:20



04 Montage  
NTS

- NOTES**
- GENERAL**  
The signs/graphics are located in an external public environment, as such all materials, fabrication and fixing to suit expected conditions.
- MATERIALITY**  
2mm painted Aluminium sign panel with external grade cast vinyl solid colour film graphics applied to sign panel with clear overcoat. To be satin finish. Folded as per existing building form. Site measure angle and issue with shopdrawings.
- FABRICATION**  
Fabricated form as per illustrations adjacent. All edges to be smoothed, slightly rounded to ensure no sharp edges. To be painted on all exposed surfaces.
- FIXING**  
Permanent conceal adhesive fix to base building wall/door surface via Soudal Fixall adhesive silicone or similar. Utilise suitable adhesive for wall surfaces/finishes, prepared and installed to manufacturers specifications to provide permanent secure fixing.
- FINISHES/COLOUR**  
As illustrated
- For colour specification refer Graphic standards
- Anti-graffiti satin finish 25% gloss level to all exposed surfaces
- GRAPHICS**  
Graphics to be external grade cast vinyl solid colour film, installed to manufacturers specifications. All lettering/forms shall be sharp and true to the selected typeface and artwork. Pre-spaced and electronically cut vinyl film, ensure cut edges are not overheated and are cut slowly to achieve a clean cut
- ILLUMINATION**  
Non-illuminated
- LOCATING PRINCIPLES**  
As noted on elevation and setout notes.
- CONTENT**  
As documented.

# Library

02 Type detail  
200mm cap height  
Scale 1:10



01 Elevation  
Milgate Lane entry  
Scale 1:20

- Notes
- GENERAL

The signs/graphics are located in an public environment, as such all materials, fabrication and fixing to suit expected conditions.
- MATERIALITY

2mm painted Aluminium sign panel, satin finish, with digital print graphics direct to painted sign panels. Clear satin overlamine.
- FABRICATION

Fabricated form as per illustration adjacent. All edges to be smoothed, slightly rounded to ensure no sharp edges. To be painted on all exposed surfaces.
- FIXING

Permanent conceal adhesive fix to base building wall/door surface via Soudal Fixall adhesive silicone or similar. Utilise suitable adhesive for wall surfaces/finishes, prepared and installed to manufacturers specifications to provide permanent secure fixing.
- FINISHES/COLOUR

As illustrated

For colour specification refer Graphic standards

Anti-graffiti satin finish 25% gloss level to all exposed surfaces
- GRAPHICS

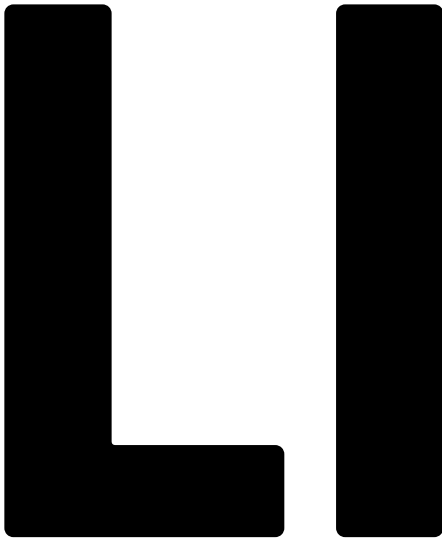
Digital print direct to sign panel as illustrated on elevation and noted in documentation. Ensure ink application is solid, no see through. Double hit of colours if required to ensure intensity and solid colour, no banding. All lettering/forms shall be sharp and true to the selected typeface and artwork.
- ILLUMINATION

Non-illuminated
- LOCATING PRINCIPLES

As noted on elevation and setout notes. Final placement TBC
- CONTENT

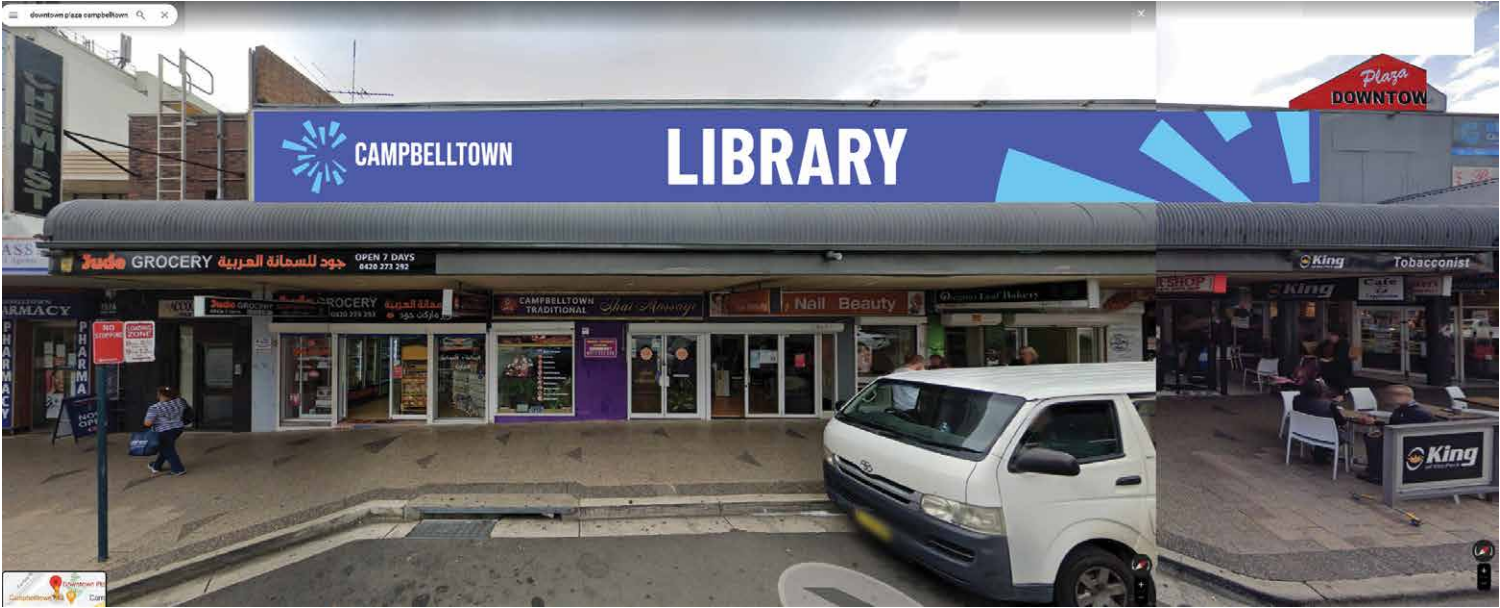
As documented



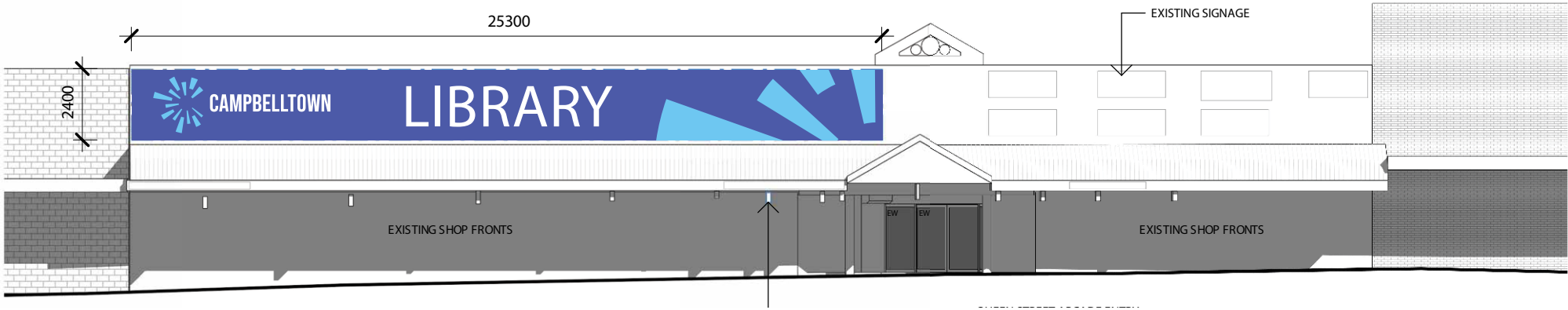


03 Type detail  
1,400mm cap height  
Scale 1:20

04 Montage  
NTS



02 Elevation  
Scale 1:100



01 Elevation  
Queen Street  
Scale 1:200

**Notes**

**GENERAL**  
Existing rope edge (assume Keder Banner system) banner system to be utilised to display new library external grade fabric banner.

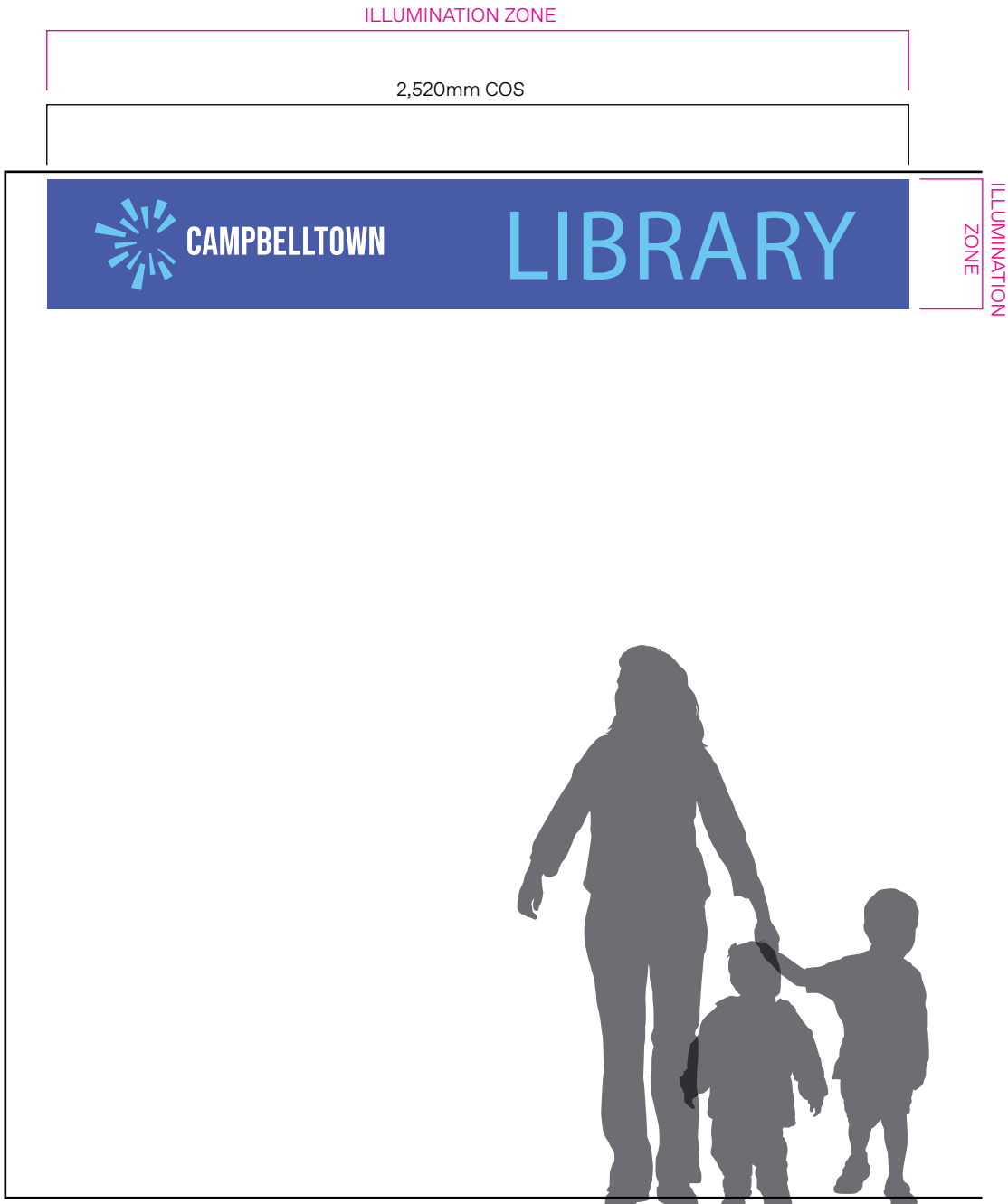
**MATERIALITY**  
Banner material to be external grade fabric suitable for location, fixing and graphic application. Final material specification to be determined by Client in relation to anticipated length of time of banner, minimum 5 year life span for material and printing. Solid graphic application, no light or see through. Banner joints to be flat heat welded seams, at regular spacing and aligned with graphics. Side edges to be continuous rope edge suitable for existing framing system (Keder banner edge - Silicone rubber beading encapsulated in a polyester scrim, suitable for aluminium sail track).

**FIXING**  
Intent is to utilise the existing banner framing system to the Queen St facade, assume Keder banner system. Review to determine if suitable to provide secure fixing for the new library banner. Identify remediation required if not suitable.

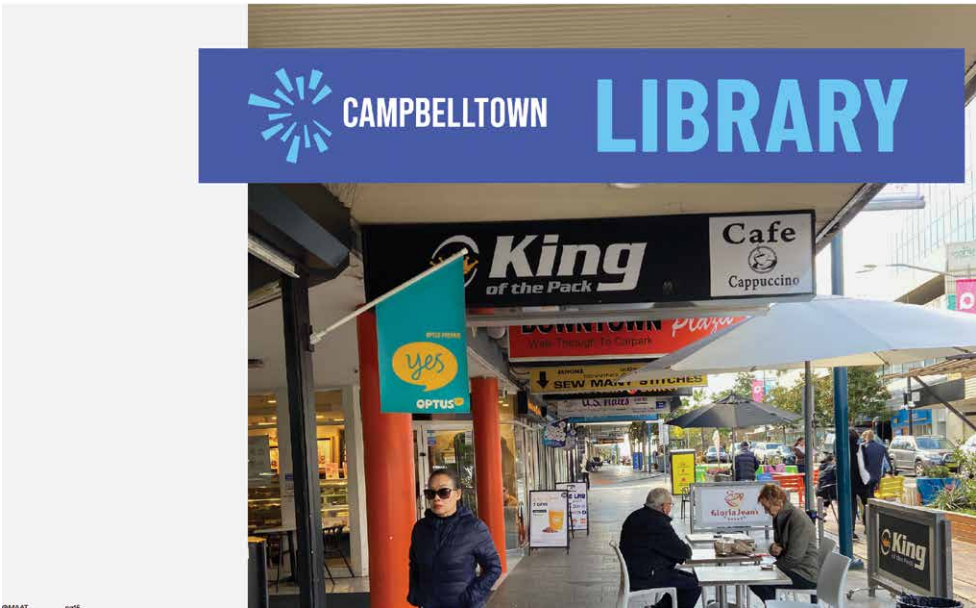
**GRAPHICS**  
Digital print direct to external grade banner fabric as illustrated on elevation and noted in documentation. Ensure ink application is solid, no see through. Double hit of colours if required to ensure intensity and solid colour, no banding. All lettering/forms shall be sharp and true to the selected typeface and artwork.

**LOCATING PRINCIPLES**  
Existing banner frame to Queen St facade as illustrated.

**CONTENT**  
As illustrated.



01 Elevation  
Under-awning suspended  
Scale 1:20



03 Montage  
NTS

LIBRARY

02 Type detail  
205mm cap height  
Scale 1:10

Notes

GENERAL  
The signs/graphics are located in a public environment, as such all materials, fabrication and fixing to suit expected conditions.

MATERIALITY  
To suit existing lightbox fabrication - to be Durotran print to translucent ultra slim acrylic panel or digital print direct to ultra slim acrylic panel, installed to manufacturers specifications to existing lightbox. Clear satin overlaminate to outside face to provide grafitti protection.

To be satin.

FABRICATION  
Electronically cut external grade ultraclear vinyl film, or ultra slim acrylic panel installed to existing lightbox framing. Ensure all corners/edges are sharp and true to the artwork.

Ensure cut edges are not overheated and are cut slowly to achieve a clean cut.

FINISHES/COLOUR  
Colour as illustrated

For colour specification refer Graphic standards

GRAPHICS  
Digital print or Durotran print direct to ultra slim acrylic panel as illustrated on elevation and noted in documentation. Ensure fade resistant ink application allows even light glow, no banding, during day & night time operation. All lettering/forms shall be sharp and true to the selected typeface and artwork.

ILLUMINATION  
To illuminate through full extent of graphic to existing lightbox. Review lightbox on site and confirm timer, off/on switch location. Review existing lightsource and replace if required to ensure bright even glow across full face.

LOCATING PRINCIPLES  
To be applied to both sides of existing lighbox at the Queen St entry to the arcade & library

CONTENT  
As documented,TBC



LIB

02 Type detail  
800mm cap height  
Scale 1:10

Returns

03 Type detail  
210mm cap height  
Scale 1:10

04 Montage  
NTS



Notes

GENERAL  
The signs/graphics are located in a public environment, exposed to weather/rain as such all materials, fabrication and fixing to suit expected conditions.

MATERIALITY  
To be digital print direct to external grade self adhesive cast vinyl solid colour film, Premium Cast Avery vinyl installed to manufacturers specifications. Clear satin overlaminate to outside face to provide graffiti protection.

To be satin.

FABRICATION  
Electronically cut self adhesive vinyl film, applied to the existing wall. Existing wall surfaces changes from painted masonry, painted FC sheet, painted tiles & glazing. Review and clean down all existing surfaces. Joint lines to be resolve in relation to graphic and background material changes. Ensure all corners/edges are sharp and true to the artwork.

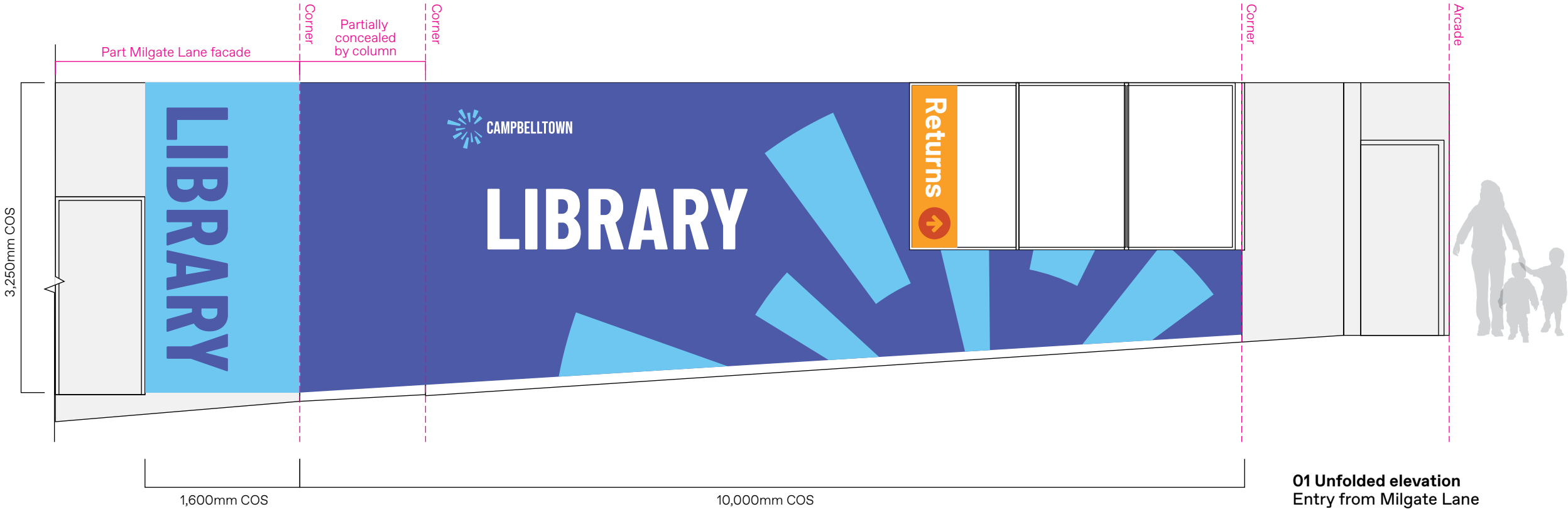
Ensure cut edges are not overheated and are cut slowly to achieve a clean cut.

FINISHES/COLOUR  
Colour as illustrated  
For colour specification refer Graphic standards

GRAPHICS  
Digital print direct to vinyl as illustrated on elevation and noted in documentation. Ensure ink application is solid, no see through. Double hit of colours if required to ensure intensity and solid colour, no banding. All lettering/forms shall be sharp and true to the selected typeface and artwork.

LOCATING PRINCIPLES  
To be applied to external/arcade wall surfaces as indicated. Refer architects documentation for background materials, Campbelltown\_Transition\_Library\_147\_157\_Queen\_St\_Campbelltown\_ARCH ITECTURE- Arcade Level 1 Elevation

CONTENT  
As documented,TBC



01 Unfolded elevation  
Entry from Milgate Lane  
Scale 1:50

MAAT

Written dimensions take precedence over scaled dimensions. Contractors shall verify all critical dimensions on site prior to commencement of work. Reproduction of the whole or part of this document constitutes an infringement of copyright. This information ideas and concepts contained in this document are confidential. The recipient(s) of this document is prohibited from disclosing such information, ideas and concepts to any person without prior written consent of Studio MAAT.

Studio MAAT  
studiomaat.com.au

Joanna Mackenzie  
0421 669 671  
joanna@studiomaat.com.au  
Bridget Atkinson  
0423 170 481  
bridget@studiomaat.com.au

Scale  
As shown at A3

Issue  
Issue for  
DA

Revisions  
A 30.11.23 Issue for DA

Project no.  
QSL2391

Drawing  
Secondary Site ID  
Milgate Lane

Date  
22.11.23

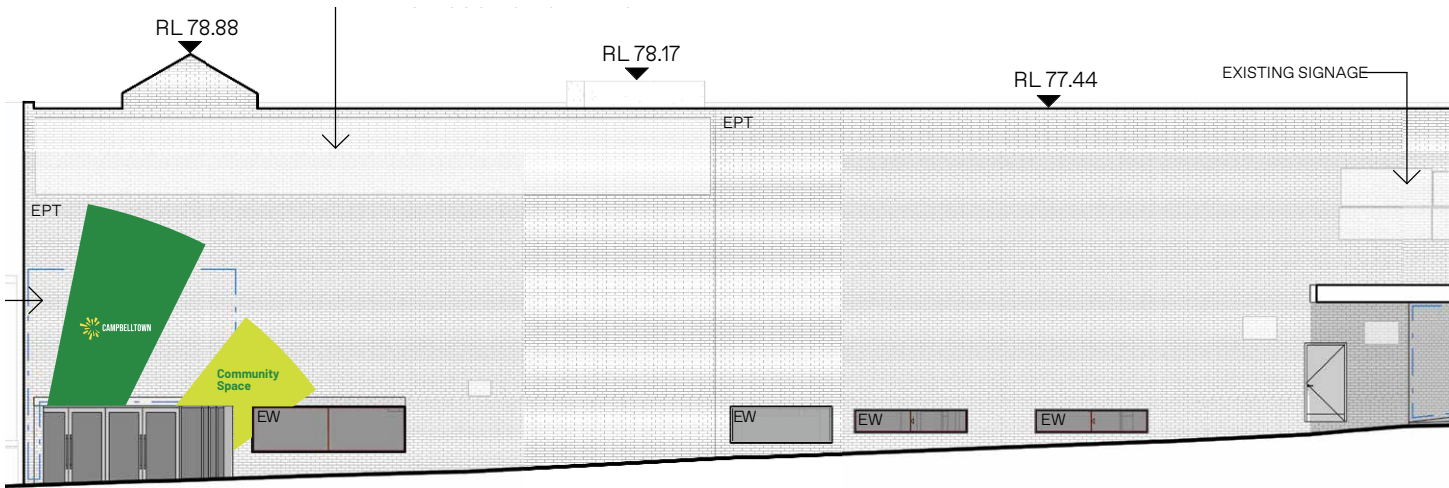
Project  
Queen Street  
Library

Drawn/Checked  
BA/JM

Signtype  
I.2.2

Drawing number  
QSL2391-I22-001

Revision  
A



**01 Part elevation**  
Milgate Lane  
Scale 1:200



**02 Part elevation Community Space entry**  
Milgate Lane  
Scale 1:100



**03 Montage**  
NTS

# Community Space

**04 Type detail**  
210mm cap height  
Scale 1:20

**Notes**

- GENERAL**  
The graphics are located in an external public environment, as such all materials, fabrication and fixing to be suited to suit expected conditions
- MATERIALITY**  
Graphics/text to be mask & spray painted with DULUX 2-pak external grade paint system, or similar appropriate for location
- FABRICATION/FIXING**  
Review wall finish prior to application, clean down as required to ensure permanent adhesion of paint system.
- FINISHES/COLOUR**  
As illustrated
- For colour specification refer Graphic standards
- To be two pack polyurethane, external grade paint system. Anti-graffiti satin finish 25% gloss level to all exposed surfaces.
- GRAPHICS**  
Graphic to be mask & spray via vinyl cut template and spray painted directly to wall surface. Template to be suitable for texture and form of the existing surface. Template lettering/forms shall be sharp and true to the selected typeface and artwork. Pre-spaced and electronically cut vinyl film, ensure cut edges are not overheated and are cut slowly to achieve a clean cut. Ensure paint application is solid, no see through.
- LOCATING PRINCIPLES**  
Final setout to be determined on site.
- CONTENT**  
As documented,TBC



# Library

02 Type detail  
90mm cap height  
Scale 1:5

## Access

Ramp and lift access  
to Library via Level 2  
entry at rear of  
Downtown Plaza

## Out of hours

Out of hours access  
to Community Space  
via Milgate Lane

03 Operational type detail  
20/15mm cap height  
Scale 1:5

05 Montage  
NTS



### Notes

**GENERAL**  
The signs/graphics are located in a public environment, as such all materials, fabrication and fixing to suit expected conditions.

**MATERIALITY**  
To be digital print direct to external grade self adhesive cast vinyl solid colour film, Premium Cast Avery vinyl installed to manufacturers specifications. Clear satin overlaminate to outside face to provide grafitti protection.

To be satin.

**FABRICATION**  
Electronically cut self adhesive vinyl film, applied to the outside face of the glazing. Ensure all corners/edges are sharp and true to the artwork.

Ensure cut edges are not overheated and are cut slowly to achieve a clean cut.

**FINISHES/COLOUR**  
Colour as illustrated

For colour specification refer Graphic standards

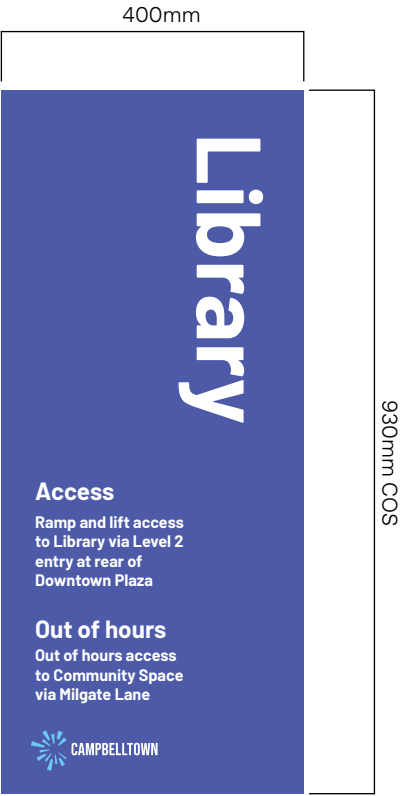
**GRAPHICS**  
Digital print direct to vinyl as illustrated on elevation and noted in documentation. Ensure ink application is solid, no see through. Double hit of colours if required to ensure intensity and solid colour, no banding. All lettering/forms shall be sharp and true to the selected typeface and artwork.

**LOCATING PRINCIPLES**  
To be applied to outside face of existing glazing, aligned with LH side, top & base of glazing framing.

**CONTENT**  
As documented,TBC



01 Elevation  
Queen St entry  
Scale 1:20



04 Elevation  
Scale 1:10

MAAT

Written dimensions take precedence over scaled dimensions. Contractors shall verify all critical dimensions on site prior to commencement of work. Reproduction of the whole or part of this document constitutes an infringement of copyright. This information ideas and concepts contained in this document are confidential. The recipient(s) of this document is prohibited from disclosing such information, ideas and concepts to any person without prior written consent of Studio MAAT.

Studio MAAT  
studiomaat.com.au

Joanna Mackenzie  
0421 669 671  
joanna@studiomaat.com.au  
Bridget Atkinson  
0423 170 481  
bridget@studiomaat.com.au

Scale  
As shown at A3

Issue  
Issue for  
DA

Revisions  
A 30.11.23 Issue for DA

Project no.  
QSL2391

Drawing  
Operational  
Entry glazing

Date  
22.11.23

Project  
Queen Street  
Library

Drawn/Checked  
BA/JM

Signtype  
O.1

Drawing number  
QSL2391-01-001

Revision  
A